



# Extreme High-Capacity Pumps



## Risk of flooding or water shortage?

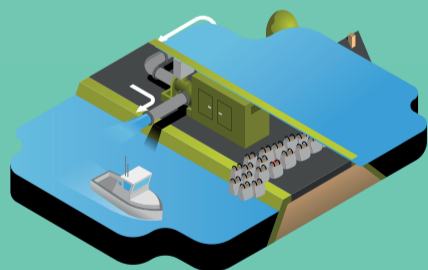
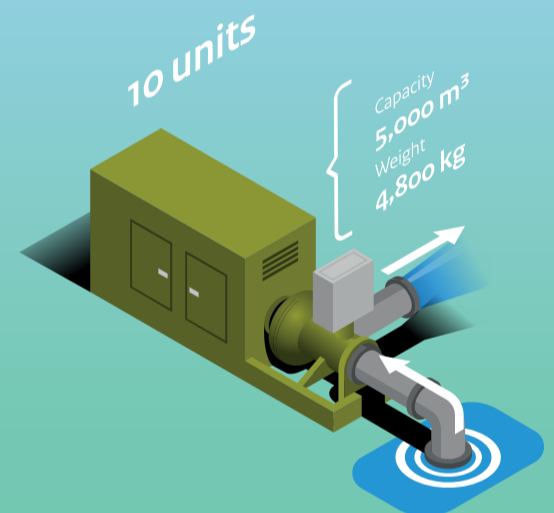
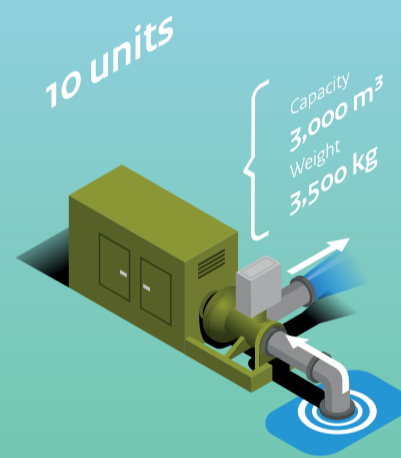
Is there a risk of flooding? Or perhaps there is a shortage of water? The Departmental Coordination Centre for Crisis Management of the Ministry of Infrastructure and Water Management (DCC I&W) has twenty mobile pumps at its disposal.

In the event of a crisis, government organisations from the Netherlands and abroad can submit a request for the use of an emergency pump. A team of experts assesses the situation and then travels to the crisis location.

## The high-capacity pumps

The Departmental Coordination Centre for Crisis Management of the Ministry of Infrastructure and Water Management (DCC I&W) has twenty mobile pumps. There are two types of pumps and the largest pump is capable of draining an Olympic swimming pool in thirty minutes.

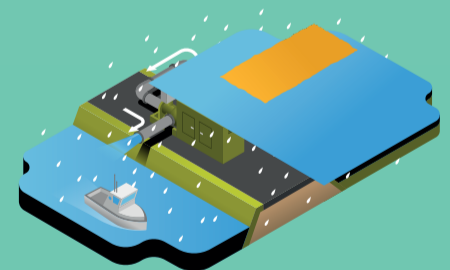
These pumps, due to their size and capacity, are not suitable to drain a flooded basement. They are well-suited for a leaking dike, circular pumping of water in a lake or to drain flooded areas after heavy rainfall.



Dike leak



Circular pumping



Flooding

## Procedure for request

For more information, please contact DCC I&W. After the request is received, a pump can be operational in the Netherlands within 12 hours and on location abroad within three days.

T + 31 (0)88 797 02 22  
E [dcc@minienw.nl](mailto:dcc@minienw.nl)  
[www.dcc-ienw.nl/themas/noodpompen](http://www.dcc-ienw.nl/themas/noodpompen)

